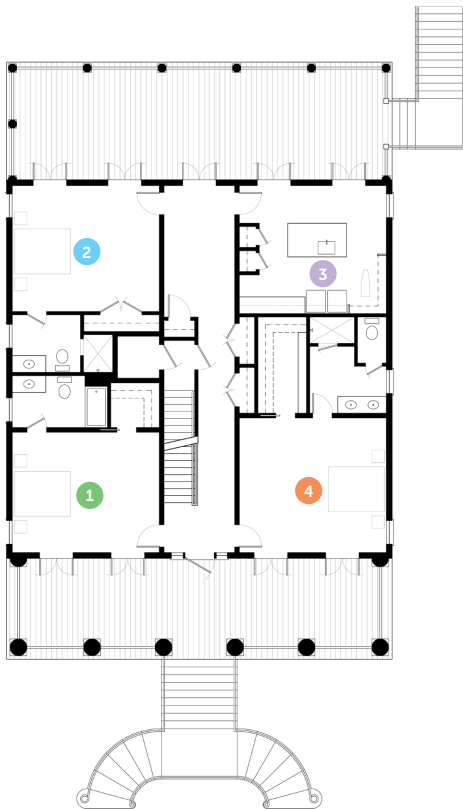


### Project Specifications

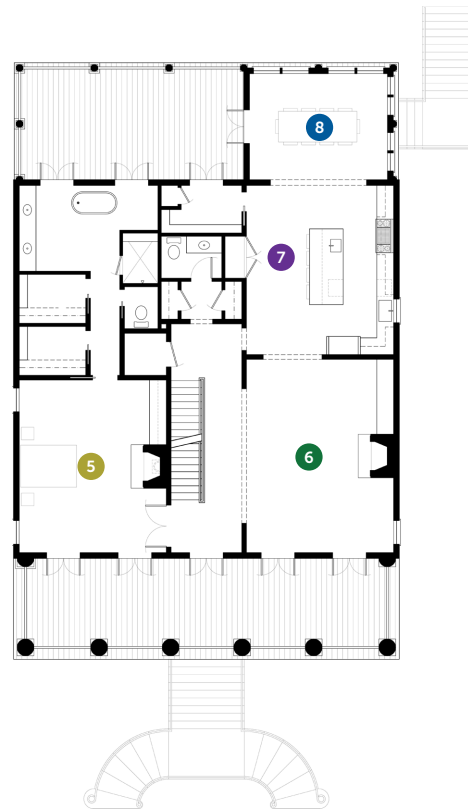
Bedrooms: 4  
 Bathrooms: 4.5  
 Heated sqft: 4,313  
 1st Floor: 2,032  
 2nd Floor: 2,262  
 3rd Floor Optional

### Overall Dimensions 71'x 46'

- 1 Bedroom 1 14'-4" x 17'-6"
- 2 Bedroom 2 15'-0" x 17'-6"
- 3 Utility Room 15'-3" x 17'-6"
- 4 Mini Master 16'-2" x 17'-6"
- 5 Master Bedroom 20'-7" x 17'-6"
- 6 Living Room 23'-0" x 17'-6"
- 7 Kitchen 20'-2" x 17'-6"
- 8 Dining Room 12'-8" x 16'-6"



First Floor



Second Floor



**HIGH TIDE**  
 DESIGN GROUP

Disclaimer: All dimensions and square footages listed are approximate. All rights to these drawings are owned by High Tide Design Group. These drawings are meant to be representative and are NOT FOR CONSTRUCTION.