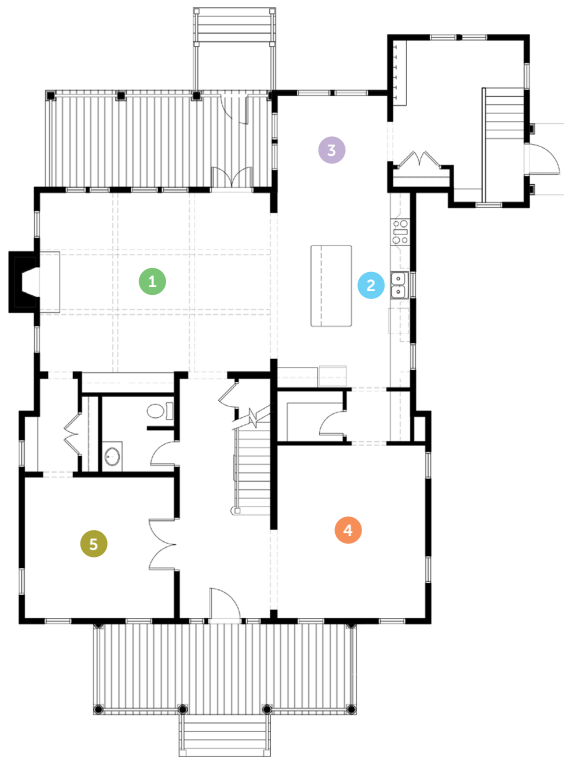


Project Specifications

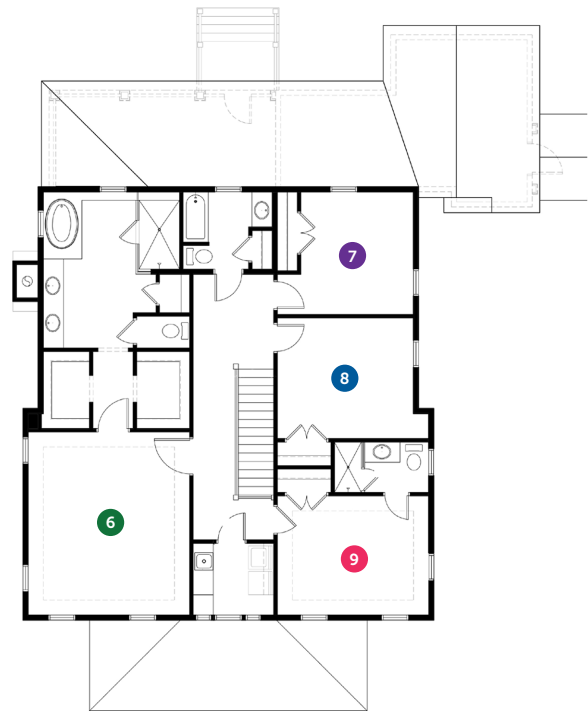
Bedrooms: 4
 Bathrooms: 3.5
 Heated sqft: 3,678
 1st Floor: 2,039
 2nd Floor: 1,639

Overall Dimensions 43'x 66'

- 1 Living 17'-6" x 22'-10"
- 2 Kitchen 13'-0" x 19'-6"
- 3 Breakfast 11'-0" x 9'-6"
- 4 Dining Room 14'-6" x 17'-0"
- 5 Study 14'-0" x 14'-10"
- 6 Master Bedroom 16'-0" x 18'-0"
- 7 Bedroom 1 12'-0" x 11'-0"
- 8 Bedroom 2 13'-6" x 12'-0"
- 9 Bedroom 3 15'-0" x 12'-0"



First Floor



Second Floor



HIGH TIDE
 DESIGN GROUP

Disclaimer: All dimensions and square footages listed are approximate. All rights to these drawings are owned by High Tide Design Group. These drawings are meant to be representative and are NOT FOR CONSTRUCTION.