

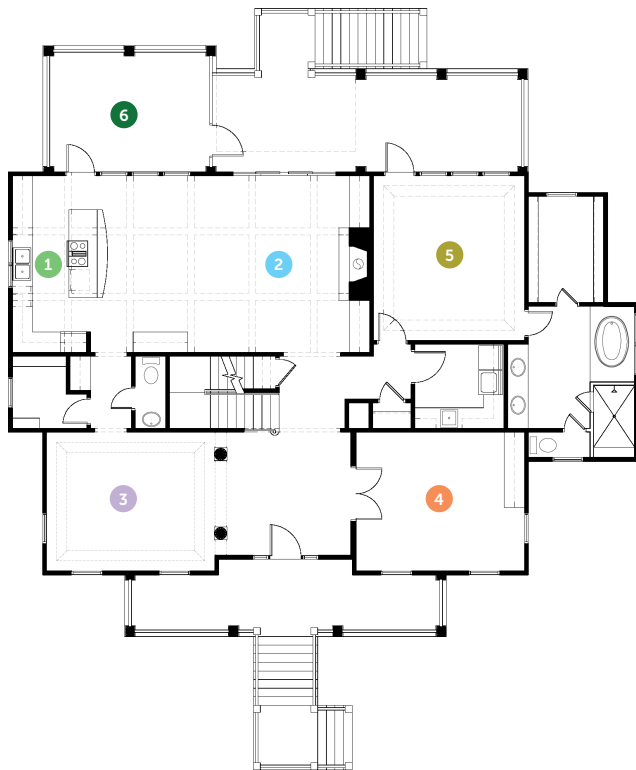
Project Specifications

Bedrooms: 4
 Bathrooms: 4.5
 Heated sqft: 3,445
 1st Floor: 2,143
 2nd Floor: 1,302

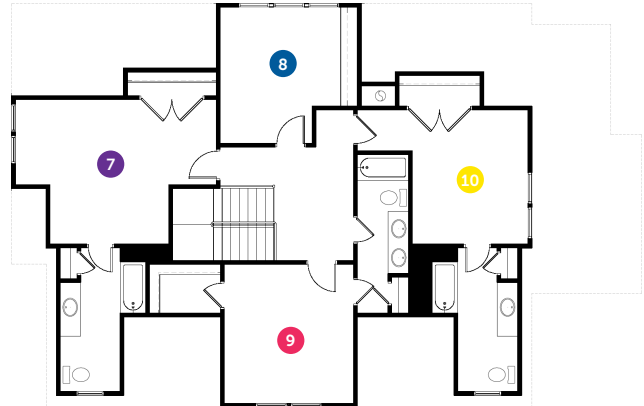
Overall Dimensions

61'x 57'

- 1 Kitchen 17'-0" x 17'-0"
- 2 Living 17'-8" x 17'-0"
- 3 Dining 16'-4" x 13'-6"
- 4 Office 16'-4" x 13'-6"
- 5 Master Bedroom 14'-8" x 16'-0"
- 6 Screened Porch 16'-6" x 12'-0"
- 7 Bedroom 1 16'-0" x 14'-0"
- 8 Family Room 13'-4" x 13'-0"
- 9 Bedroom 2 12'-6" x 13'-6"
- 10 Bedroom 3 11'-0" x 13'-0"



First Floor



Second Floor



Disclaimer: All dimensions and square footages listed are approximate. All rights to these drawings are owned by High Tide Design Group. These drawings are meant to be representative and are NOT FOR CONSTRUCTION.